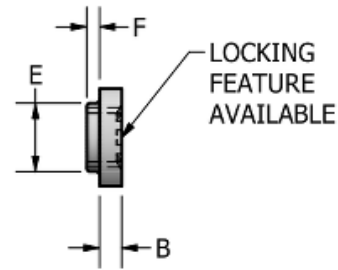
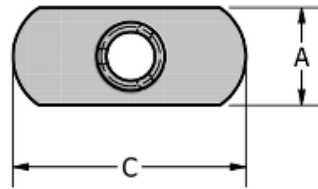


Double Tab Spotweld Nut



DISTRIBUTED BY

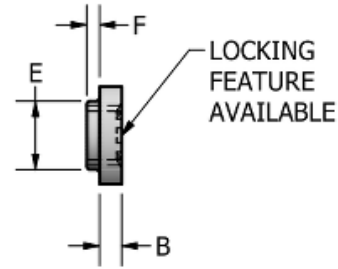
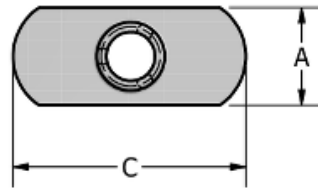
ADVANCE COMPONENTS

advancecomponents.com 972-446-5500

| Product | Thread Size | Width (in) | Thickness (in) | Length (in) | A (in) | Tol A (in) | B (in) | Tol B (in) | C (in) | Tol C (in) | E (in) | Tol E (in) | F (in) | Hole In Sheet (in) |
|----------|-------------|------------|----------------|-------------|--------|------------------|--------|------------------|--------|------------------|--------|------------------|--------|--------------------|
| ND 1114 | #6-32 | 7/16 | 3/32 | 7/8 | 0.438 | +0.015 -0.005 | 0.094 | +0.003 -0.003 | 0.875 | +0.015 -0.015 | 0.188 | +0.010 -0.010 | 0.030 | 0.203 |
| ND 1414 | #8-32 | 7/16 | 3/32 | 7/8 | 0.438 | +0.015 -0.005 | 0.094 | +0.003 -0.003 | 0.875 | +0.015 -0.015 | 0.203 | +0.010 -0.010 | 0.030 | 0.219 |
| ND 1514 | #10-24 | 7/16 | 3/32 | 7/8 | 0.438 | +0.015 -0.005 | 0.094 | +0.003 -0.003 | 0.875 | +0.015 -0.015 | 0.234 | +0.010 -0.010 | 0.030 | 0.250 |
| ND 1714 | #10-32 | 7/16 | 3/32 | 7/8 | 0.438 | +0.015 -0.005 | 0.094 | +0.003 -0.003 | 0.875 | +0.015 -0.015 | 0.234 | +0.010 -0.010 | 0.030 | 0.250 |
| ND 2116 | 1/4-20 | 7/16 | 3/32 | 1 | 0.438 | +0.015 -0.005 | 0.094 | +0.003 -0.003 | 1.000 | +0.015 -0.015 | 0.281 | +0.010 -0.010 | 0.030 | 0.297 |
| ND 2116L | 1/4-20 | 7/16 | 3/32 | 1 | 0.438 | +0.015 -0.005 | 0.094 | +0.003 -0.003 | 1.000 | +0.015 -0.015 | 0.281 | +0.010 -0.010 | 0.030 | 0.297 |
| ND 2118 | 1/4-20 | 1/2 | 1/8 | 1 1/8 | 0.500 | +0.020 -0.005 | 0.125 | +0.003 -0.003 | 1.125 | +0.015 -0.015 | 0.297 | +0.010 -0.010 | 0.050 | 0.312 |
| ND 2724 | 5/16-18 | 5/8 | 9/64 | 1 1/2 | 0.625 | +0.030 -0.005 | 0.141 | +0.004 -0.002 | 1.500 | +0.015 -0.015 | 0.359 | +0.010 -0.010 | 0.080 | 0.375 |
| ND 2724L | 5/16-18 | 5/8 | 9/64 | 1 1/2 | 0.625 | +0.030 -0.005 | 0.141 | +0.004 -0.002 | 1.500 | +0.015 -0.015 | 0.359 | +0.010 -0.010 | 0.080 | 0.375 |
| ND 3324 | 3/8-16 | 5/8 | 9/64 | 1 1/2 | 0.625 | +0.030 -0.005 | 0.141 | +0.004 -0.002 | 1.500 | +0.015 -0.015 | 0.438 | +0.010 -0.010 | 0.090 | 0.453 |
| ND 3924 | 7/16-20 | 3/4 | 3/16 | 1 1/2 | 0.750 | +0.047 -0.016 | 0.188 | +0.003 -0.003 | 1.500 | +0.015 -0.015 | 0.521 | +0.015 -0.015 | 0.090 | 0.542 |
| ND 4424 | 1/2-13 | 3/4 | 3/16 | 1 1/2 | 0.750 | +0.047 -0.016 | 0.188 | +0.003 -0.003 | 1.500 | +0.015 -0.015 | 0.584 | +0.015 -0.015 | 0.090 | 0.604 |

Material: C1010 High-Welding Quality, Low Carbon Steel
Finish: Plain, Unless Specified
Threads: Unified Standard Class 2B ASME B 1.1-2003

Double Tab Spotweld Nut



DISTRIBUTED BY

ADVANCE COMPONENTS

advancecomponents.com 972-446-5500

| Product | Thread Size | Width (mm) | Thickness (mm) | Length (mm) | A (mm) | Tol A (mm) | B (mm) | Tol B (mm) | C (mm) | Tol C (mm) | E (mm) | Tol E (mm) | F (mm) | Tol F (mm) | Hole In Sheet (mm) |
|-----------|---------------|------------|----------------|-------------|--------|--------------|--------|--------------|--------|--------------|--------|--------------|--------|--------------|--------------------|
| NDM 03522 | M3.5 X 0.6-6H | 11.00 | 2.4 | 22.00 | 11.00 | +0.3 -0.2 | 2.40 | +0.1 -0.1 | 22.00 | +0.4 -0.4 | 4.80 | +0.2 -0.3 | 0.80 | +0.3 -0.1 | 5.2 |
| NDM 04022 | M4 X 0.7-6H | 11.00 | 2.4 | 22.00 | 11.00 | +0.3 -0.2 | 2.40 | +0.1 -0.1 | 22.00 | +0.4 -0.4 | 5.20 | +0.2 -0.3 | 0.80 | +0.3 -0.1 | 5.6 |
| NDM 05022 | M5 X 0.8-6H | 11.00 | 2.4 | 22.00 | 11.00 | +0.3 -0.2 | 2.40 | +0.1 -0.1 | 22.00 | +0.4 -0.4 | 6.00 | +0.2 -0.3 | 0.80 | +0.3 -0.1 | 6.4 |
| NDM 06028 | M6 X 1.0-6H | 13.00 | 3.2 | 28.50 | 13.00 | +0.4 -0.3 | 3.20 | +0.1 -0.1 | 28.50 | +0.4 -0.4 | 7.60 | +0.2 -0.3 | 1.20 | +0.3 -0.1 | 8.0 |
| NDM 08038 | M8 X 1.25-6H | 16.00 | 3.6 | 38.00 | 16.00 | +0.4 -0.3 | 3.60 | +0.1 -0.1 | 38.00 | +0.4 -0.4 | 9.20 | +0.2 -0.3 | 2.00 | +0.3 -0.1 | 9.6 |
| NDM 10038 | M10 X 1.5-6H | 16.00 | 3.6 | 38.00 | 16.00 | +0.4 -0.3 | 3.60 | +0.1 -0.1 | 38.00 | +0.4 -0.4 | 11.80 | +0.2 -0.3 | 2.40 | +0.3 -0.1 | 12.2 |
| NDM 12038 | M12 X 1.75-6H | 19.40 | 4.8 | 38.00 | 19.40 | +0.9 -0.8 | 4.80 | +0.1 -0.1 | 38.00 | +0.4 -0.4 | 14.10 | +0.4 -0.4 | 2.40 | +0.3 -0.1 | 14.7 |

Material: C1010 High-Welding Quality, Low Carbon Steel

Finish: Plain, Unless Specified

Threads: ASME B 1.13M-2005